



BDO CORPORATE FINANCE | HEALTHCARE

PRIVATE AND VOLUNTARY NURSING HOME FAIR DEAL RATE ANALYSIS DECEMBER 2022

IDEAS | PEOPLE | TRUST

BDO

FAIR DEAL RATE (FDR) CHANGE

DECEMBER 2022

INTRODUCTION

Every month, the HSE releases an update on the prevailing FDR for private & voluntary nursing homes operating under the Fair Deal Scheme across the country. This is the maximum price per week agreed between the nursing home and the HSE under the nursing home support scheme, providing an insight into not only the highest and lowest rates being achieved but also into the changes occurring on a monthly basis for each individual private and voluntary nursing home.

Nursing Homes under the Fair Deal Scheme allow for residents to pay only a portion of their cost of care and the remaining is paid by the HSE to the nursing home.

For the past number of years, our Healthcare Team in Corporate Finance has analysed these changes, noting trends and patterns on a county-by-county basis and an all-country basis. We have now prepared this report to highlight the changes in the rate in the last quarter of 2022. We have also taken to opportunity to highlight changes in the rate between December 2021 and December 2022.

BDO's Healthcare Team provides the following Corporate Finance Services:

- Development financing and restructuring
- Financial due diligence
- Rescue, recovery & turnaround
- Mergers & acquisitions
- NTPF negotiations.

If you would like to seek advice on taking action from this report, BDO's Corporate Finance Healthcare team can assist you, contact us on (061) 464 822 or email:



BRIAN MCENERY

Managing Partner
bmcenery@bdo.ie



STEPHEN O'FLAHERTY

Partner,
Corporate Finance
soflaherty@bdo.ie



MATTHEW MCENERY

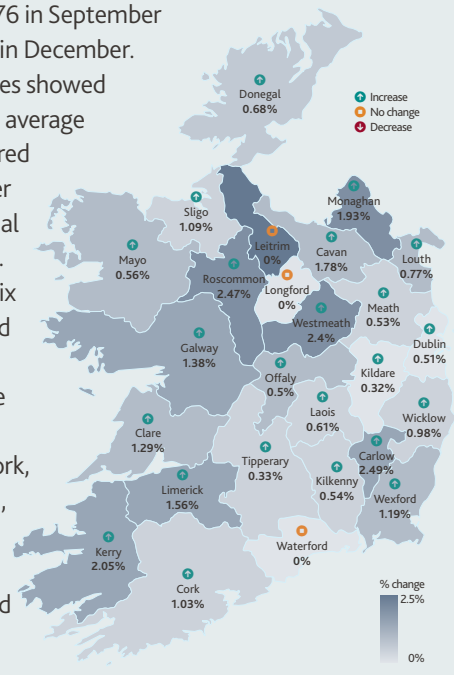
Senior Manager,
Corporate Finance
mmcenery@bdo.ie

NTPF WEEKLY RATES: AVERAGE QUARTERLY % CHANGE (SEPTEMBER/DECEMBER)

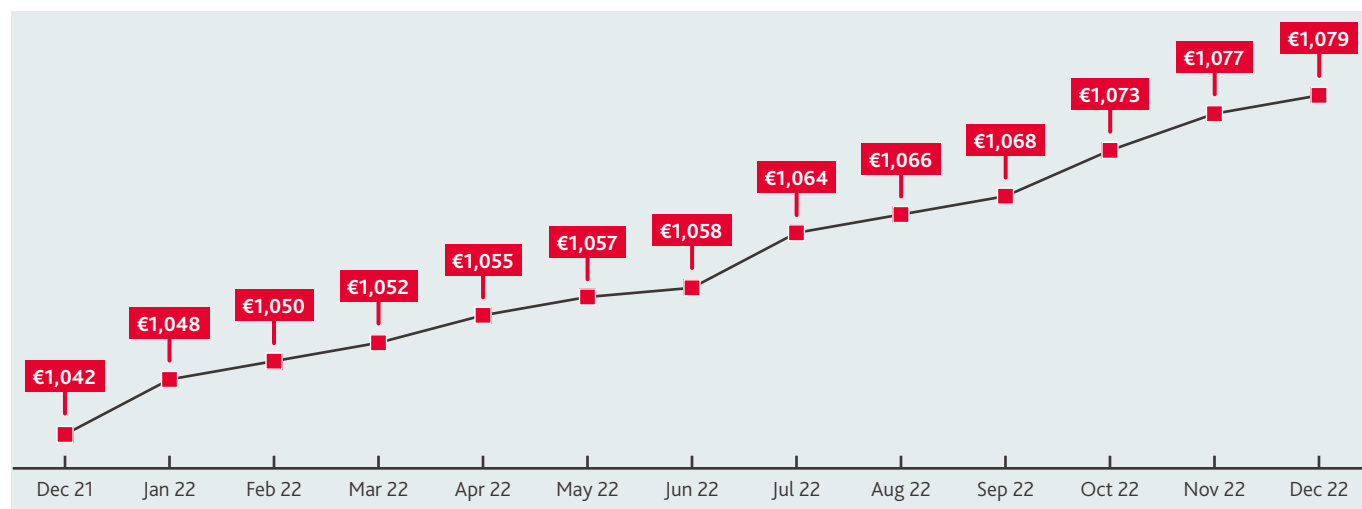
FDR COMPARISON SEPTEMBER '22 VS DECEMBER '22

This map shows the quarterly average % change in agreed NTPF Fair Deal rates by county in December 2022 compared to the rates in September 2022 of voluntary and private nursing homes:

- The FDR changes are a result of successful negotiation between individual nursing homes and the NTPF to agree on a maximum price that the nursing home charges under the nursing home support scheme on a weekly basis.
- Country average weekly rate has increased by 1.00% from €1,068.39 in September 2022 to €1,079.11 in December 2022.
- 23 counties showed an increase in the weekly average NTPF Fair Deal rates in December compared to September with the highest rate increase of 2.49% in Carlow, where the average rate increased from €984.17 to €1,008.67. The lowest recorded increase of 0.32% was in Kildare where the average weekly rate increased from €1,115.76 in September to €1,119.33 in December.
- Three counties showed no change in average rates compared to September 2022 Fair Deal weekly rates.
- There were six homes closed during this period. These homes were located in Cork, Roscommon, Limerick, Westmeath, Tipperary and Wexford.



LAST 12 MONTHS COUNTRY AVERAGE WEEKLY FDR INCREASES FOR PRIVATE NURSING HOMES IN IRELAND



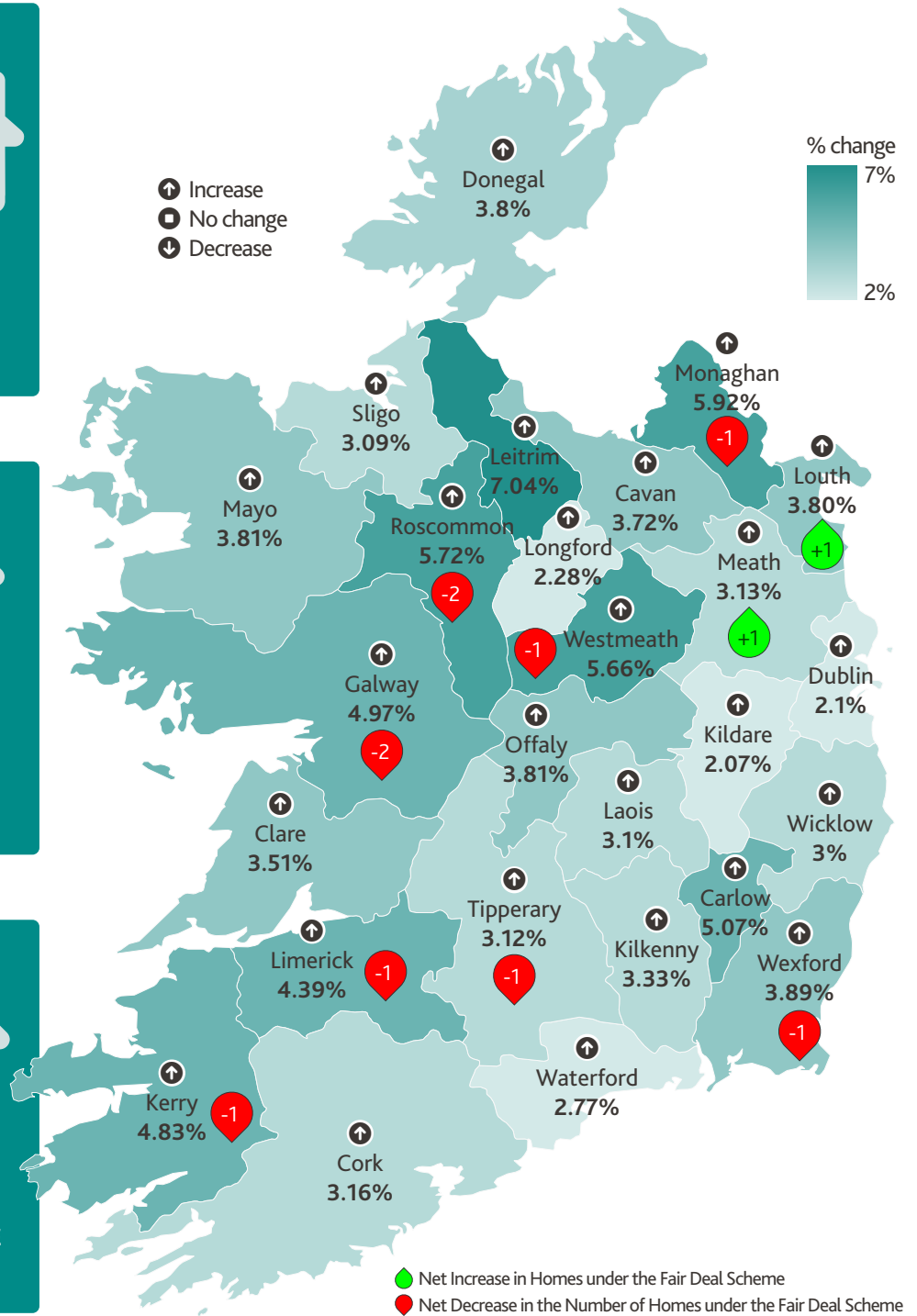
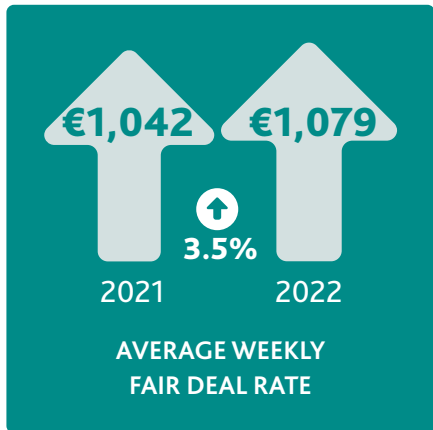
NTPF WEEKLY RATES*

COUNTY	SEP '22	DEC '22		% CHANGE	DEC '21	NO. OF NURSING HOMES			
						SEP '22	DEC '22	CHANGE	
Carlow	984	1,009	↑	2.49%	960	6	6	○	0
Cavan	1,019	1,036	↑	1.75%	999	7	7	○	0
Clare	966	978	↑	1.29%	945	12	12	○	0
Cork	1,062	1,073	↑	1.03%	1,040	49	48	↓	-1
Donegal	970	977	↑	0.68%	941	14	14	○	0
Dublin	1,243	1,249	↑	0.51%	1,223	90	90	○	0
Galway	985	999	↑	1.38%	951	33	33	○	0
Kerry	974	994	↑	2.05%	948	16	16	○	0
Kildare	1,116	1,119	↑	0.32%	1,097	21	21	○	0
Kilkenny	1,031	1,037	↑	0.54%	1,003	9	9	○	0
Laois	1,033	1,039	↑	0.61%	1,008	4	4	○	0
Leitrim	1,041	1,041	○	0.00%	973	2	2	○	0
Limerick	987	1,002	↑	1.60%	960	22	21	↓	-1
Longford	987	987	○	0.00%	965	3	3	○	0
Louth	1,074	1,083	↑	0.77%	1,043	9	9	○	0
Mayo	986	991	↑	0.56%	955	18	18	○	0
Meath	1,084	1,090	↑	0.53%	1,057	19	19	○	0
Monaghan	1,039	1,059	↑	1.93%	1,000	4	4	○	0
Offaly	1,004	1,009	↑	0.50%	972	5	5	○	0
Roscommon	977	1,001	↑	2.47%	947	9	8	↓	-1
Sligo	1,073	1,084	↑	1.09%	1,052	6	6	○	0
Tipperary	974	977	↑	0.33%	948	25	24	↓	-1
Waterford	1,036	1,036	○	0.00%	1,008	9	9	○	0
Westmeath	973	996	↑	2.40%	943	9	8	↓	-1
Wexford	987	999	↑	1.19%	962	14	13	↓	-1
Wicklow	1,121	1,132	↑	0.98%	1,099	18	18	○	0
COUNTRY AVERAGE	1,068	1,079	↑	1.00%	1,042	433	427	↓	-6

*Figures are rounded, Country average rates provided includes all private & voluntary nursing homes under the Fair Deal Scheme

SNAPSHOT OF CHANGES

DECEMBER 2021 – DECEMBER 2022





FOR MORE INFORMATION:

CALL

061 464 822

or email:

BRIAN MCENERY

bmcenery@bdo.ie

STEPHEN O'FLAHERTY

soflaherty@bdo.ie

MATTHEW MCENERY

mmcenery@bdo.ie

This publication has been carefully prepared, but it has been written in general terms and should be seen as containing broad statements only. This publication should not be used or relied upon to cover specific situations and you should not act, or refrain from acting, upon the information contained in this publication without obtaining specific professional advice. Please contact BDO Ireland to discuss these matters in the context of your particular circumstances. BDO Ireland, its partners, employees and agents do not accept or assume any responsibility or duty of care in respect of any use of or reliance on this publication, and will deny any liability for any loss arising from any action taken or not taken or decision made by anyone in reliance on this publication or any part of it. Any use of this publication or reliance on it for any purpose or in any context is therefore at your own risk, without any right of recourse against [member firm name] or any of its partners, employees or agents.

BDO is authorised by the Institute of Chartered Accountants in Ireland to carry on investment business.

BDO, a partnership established under Irish Law, is a member of BDO International Limited, a UK company limited by guarantee, and forms part of the international BDO network of independent member firms.

BDO is the brand name for the BDO International network and for each of the BDO Member Firms.

Copyright © March 2023 BDO Ireland. All rights reserved. Published in Ireland.

www.bdo.ie

SOURCE OF INFORMATION

Health Service Executive(HSE):

<https://www2.hse.ie/services/fair-deal-scheme/about-the-fair-deal-scheme.html>

